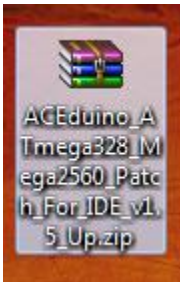




Using the patch of ACEduino ATmega 328/Mega2560 to the Arduino IDE v1.5 or higher

1. Download the ZIP file and extract the content

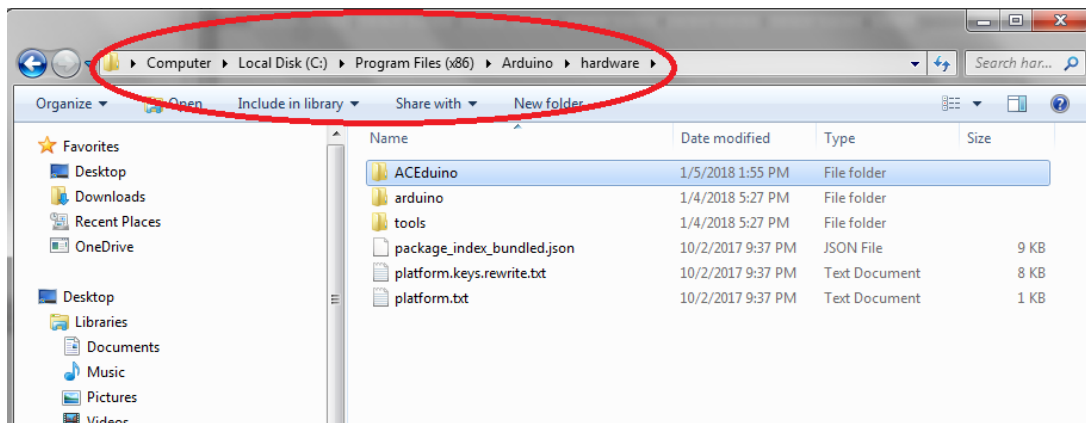


-----→ ZIP File



-----→ Extracted File

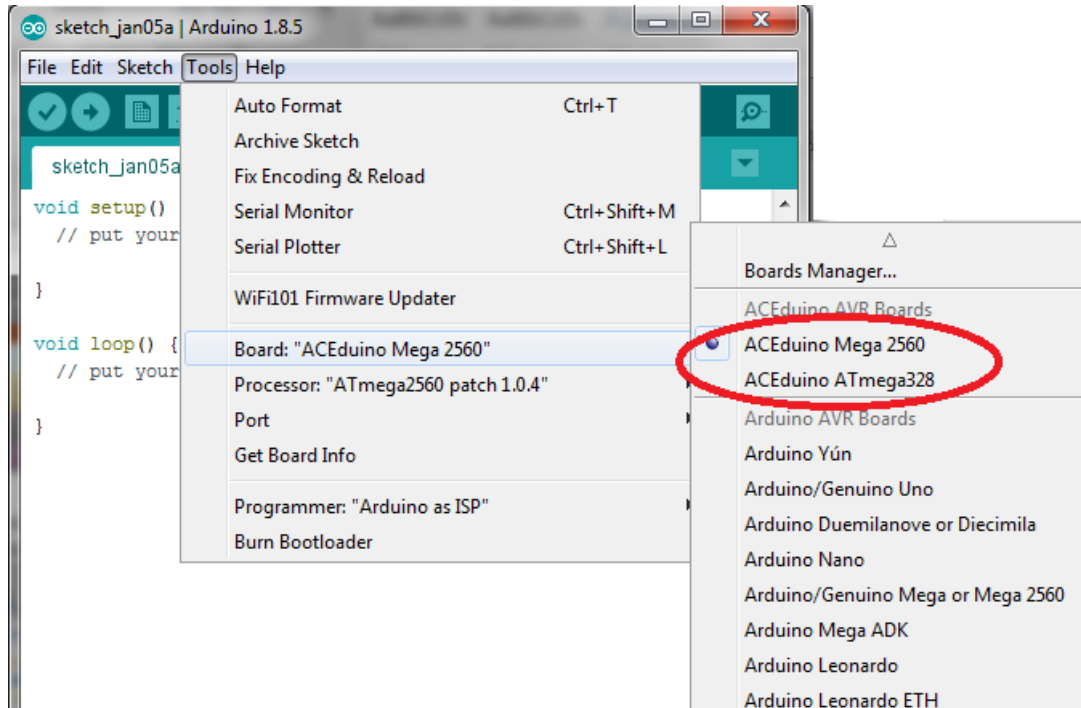
2. Copy the extracted file and paste it on the hardware folder of the path where you installed the Arduino.



3. Done

A. Testing if the extracted file is really working

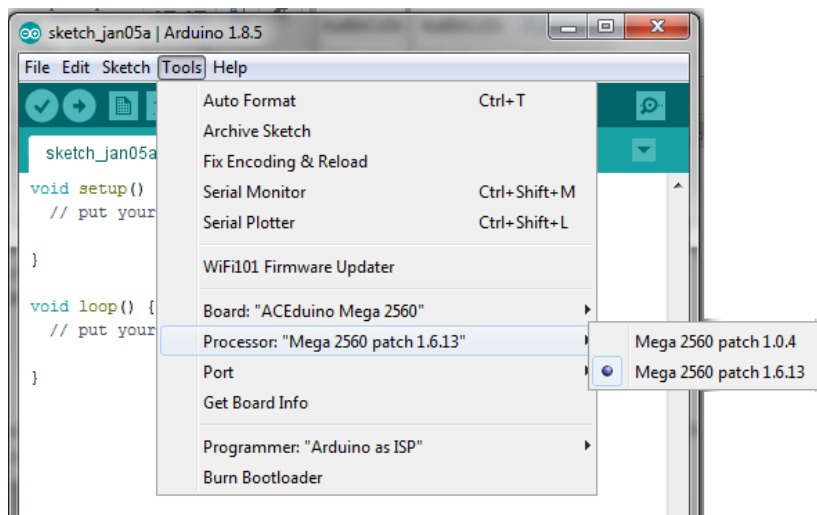
1. Open Arduino IDE.
2. Check if your board is connected to correct port. (See Device Manager under Ports). Select either ACEduino Mega 2560 or ATmega328.



3. Upload a sample sketch. (Example : Files>Example>01.Basics>Blink).
4. The LED on the board should be blinking.

B. Burning Bootloader to the ACEduino Mega 2560/ ATmega328 Board

1. To update the bootloader to ACEduino ATmega328, click Tools>Processor and select Mega 2560 patch 1.6.13. and then click "Burn Bootloader". One way of burning bootloader to the board is by using Arduino ISP. See "Arduino as ISP and Arduino Bootloaders". LINK: <https://www.arduino.cc/en/Tutorial/ArduinoISP>
2. To update the bootloader to ACEduino Mega 2560, click Tools>Processor and select Mega 2560 patch 1.6.13 and then click "Burn Bootloader".



3. If you want to revert to original version of ACEduino Mega 2560, select Mega 2560 patch 1.0.4 and then click "Burn Bootloader".

